



# A Sector Pathways Strategy for California

Tim Rainey  
Executive Director

# California Workforce Investment Board

## Statutory Responsibilities

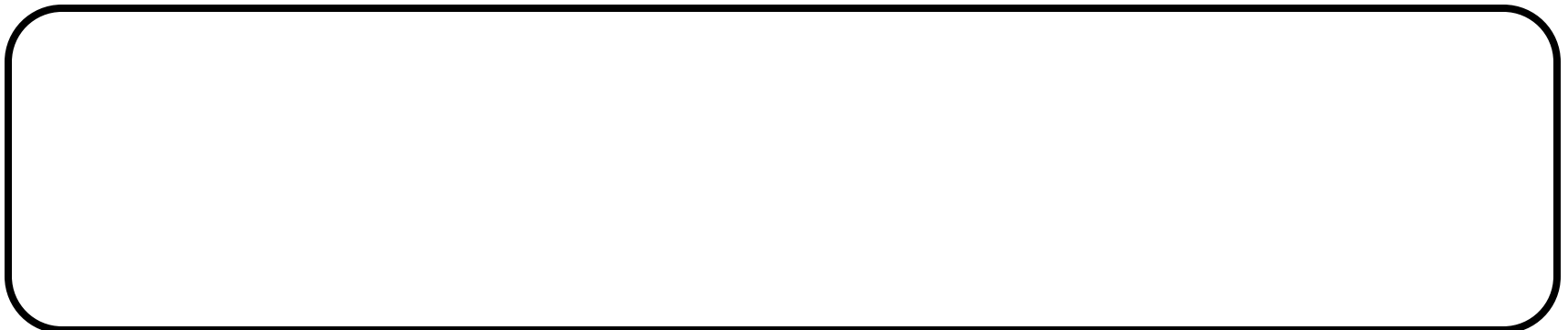
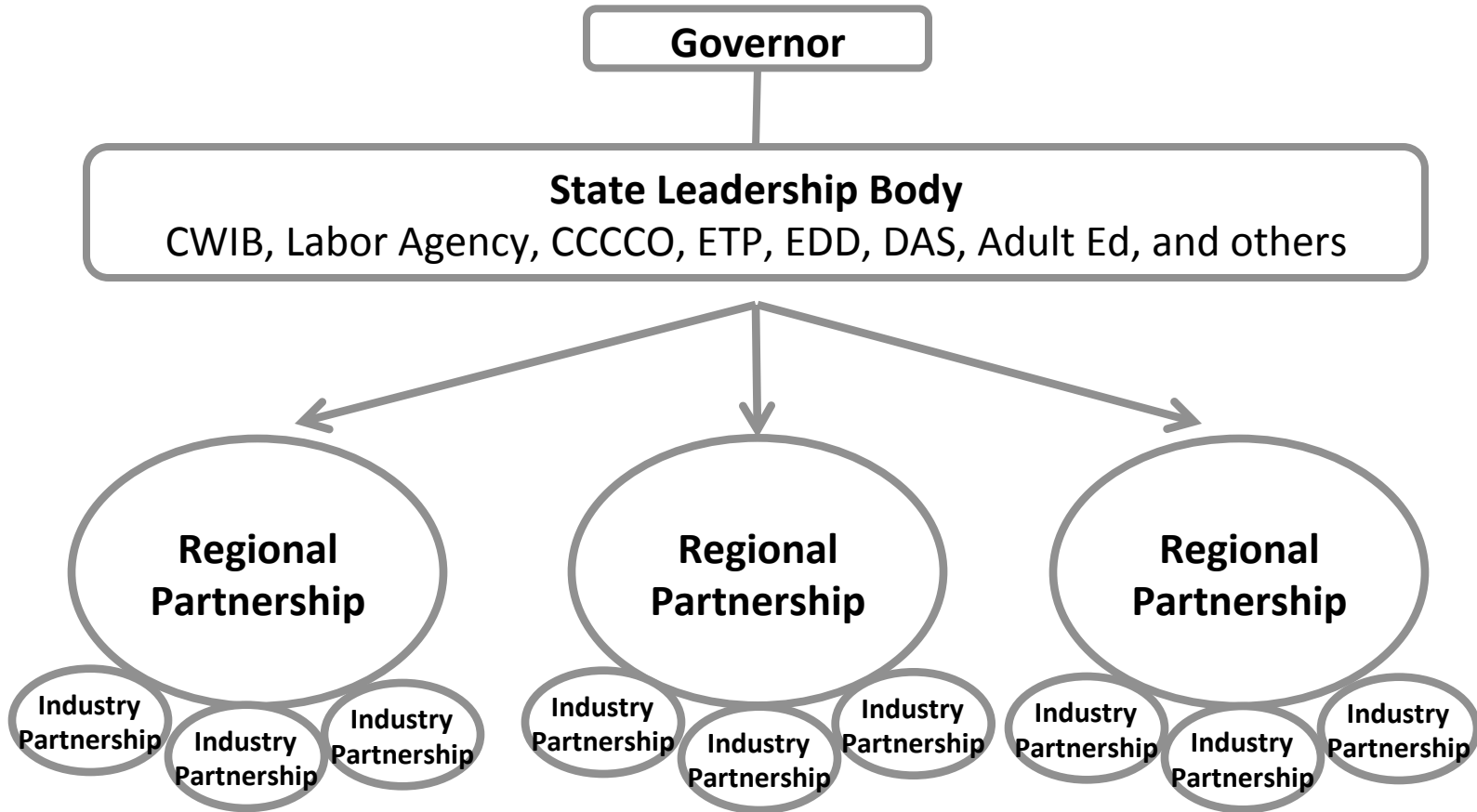
- Develop a unified, strategic workforce development plan as mandated by SB 293 .
- Promote linkages among education, workforce preparation, and economic development organizations at the State level.
- Advocate for continuous improvement of the statewide workforce system.
- Recommend to the Governor state performance measures and negotiated performance levels.
- Coordinate the development of the State Strategic Plan for Title I of the Workforce Investment Act and submit it to the Governor
- Establish criteria for the Gov' s 15 % WIA Discretionary funding.
- Certification of Local Workforce Investment Boards.

# California Workforce Investment Board

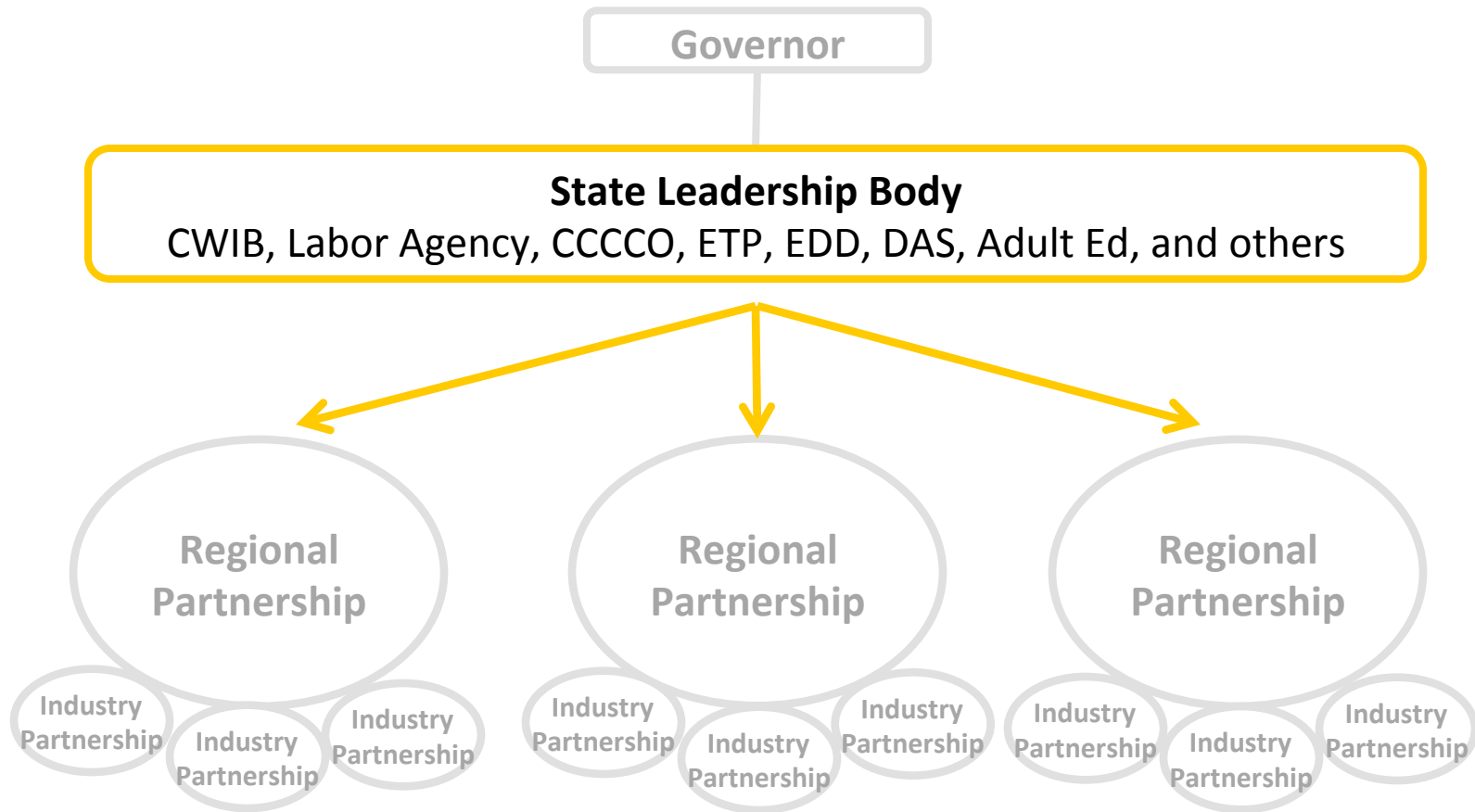
## Key Initial Goals

- Reconstitute Board membership
- Re-write the WIA state plan, moving it from compliance to strategy with specific goals and benchmarks
- Implement SB 698 and SB 734
- Move toward the development of a statewide industry-driven sector/pathways strategy

# A Sector Pathways Strategy for California

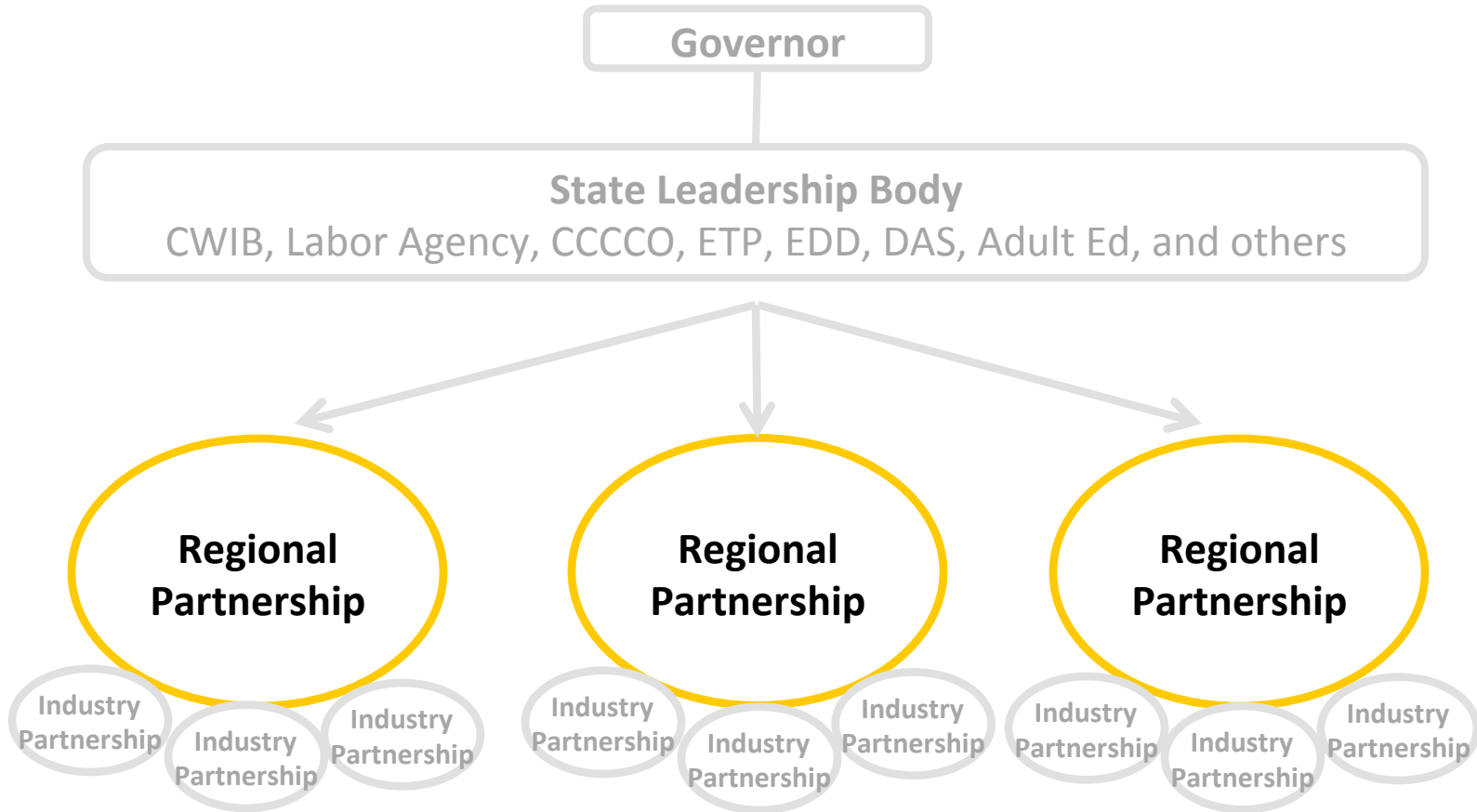


# A Sector Pathways Strategy for California



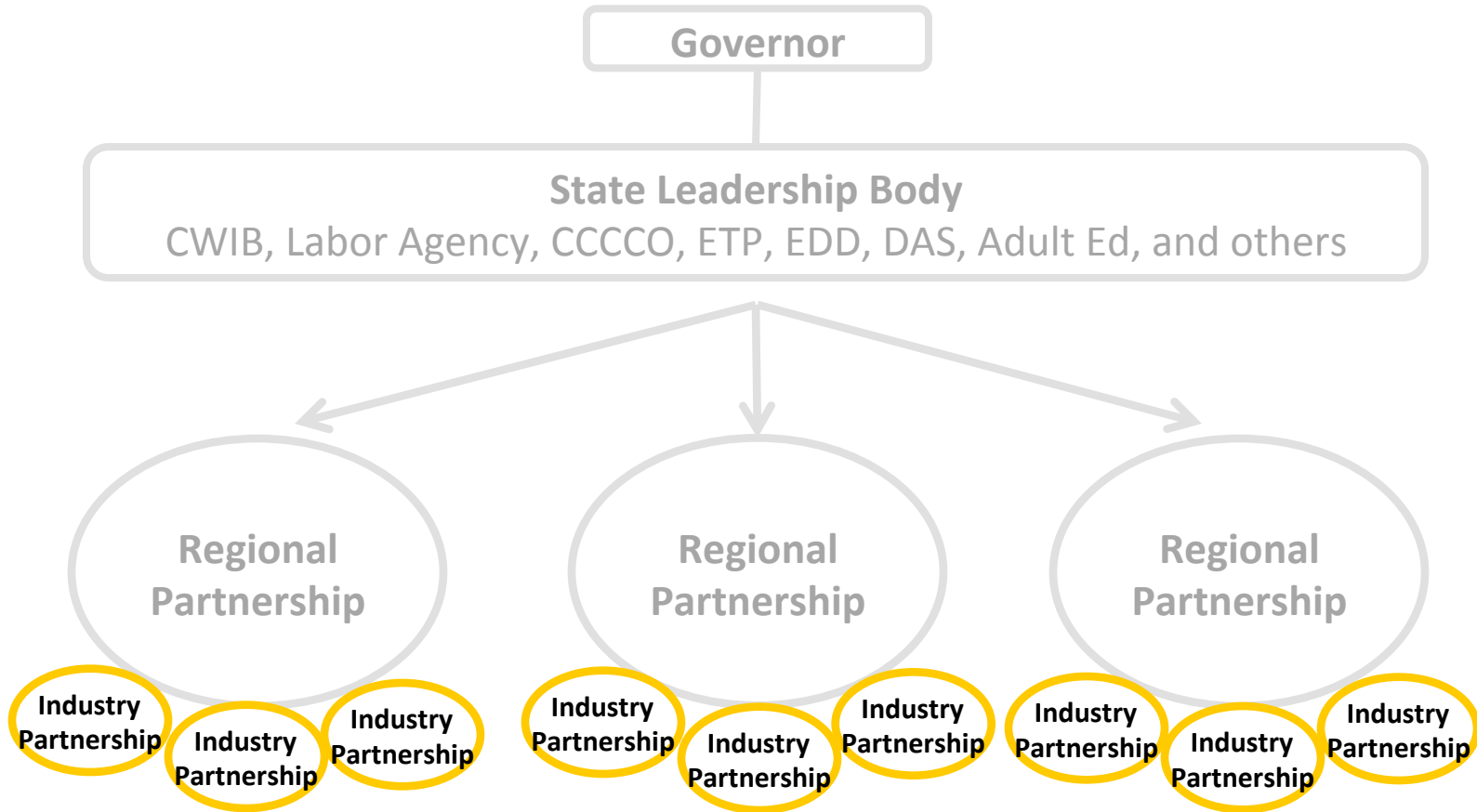
- Develop shared goals for the system;
- Align and repurpose resources to achieve those goals;
- Establish metrics for success and develop “integrated” data collection system;
- Establish statewide learning communities and support TA to regions;
- Work together to develop an effective system of actionable labor market information in order to monitor progress and make course corrections.

# A Sector Pathways Strategy for California



- Identify key competitive and emerging industries in the region;
- Align coordinate, integrate resources and services to support the development of industry-specific career pathways partnerships in those targeted industries;
- Identify and access additional federal, state, private, and philanthropic resources

# A Sector Pathways Strategy for California



- Map career paths in the targeted industry;
- Integrate services and resources to develop career pathway programs that are aligned with the needs of industry;
- Include on-ramps for underprepared students; use evidence-based practices; provide supportive services; and provide students with industry-valued credentials or degrees;
- Develop other strategies to support industry workforce needs and worker career advancement.

# DOL Workforce Innovation Fund

**Total:** \$98.5 Million

**Grant Amount:** \$1 – 12 Million (10% Admin) (20% Evaluation)

**Closing Date:** March 22, 2012

**Period of Performance:** Up to 40 months (Plus minimum 12 month evaluation)

## **Purpose:**

- Deliver services more efficiently and achieve better outcomes, especially for those who have been unemployed for many months;
- Support system reforms and innovations that facilitate cooperation across programs and funding streams;
- Ensure that education, employment, and training services are developed in partnership with employers and industry sectors and reflect real skill needs; and
- Build knowledge about effective practices through evaluation and translating “lessons learned” into improved labor market outcomes.



# California Workforce Investment Board

## For More Information

The screenshot shows the homepage of the California Workforce Investment Board. At the top, there is a navigation bar with links for Home, Special Committees, Local Boards, Meetings, Plans/Policies, Resources, and Small Business Advocate. Below this is a search bar and a language selector set to 'California'. The main content area features a header with the board's name and a welcome message. A central image shows wind turbines. Below the image is a 'HIGHLIGHTS' section with a calendar and several icons representing different initiatives like 'KEEP YOUR HOUSE', 'LEARN TO SUCCEED', 'THIS YEAR POWER', 'RISING TRANSPARENCY', and 'SPEAK OUT WATER'. The 'Upcoming Events' section lists several meetings and conferences throughout 2012. On the left side, there is a 'FEATURED LINKS' section with various departmental links and a language selection dropdown. On the right side, there are 'QUICK LINKS' and 'I AM LOOKING FOR INFORMATION ON' sections with links to various resources and services.

[www.cwib.ca.gov](http://www.cwib.ca.gov)

Tim Rainey  
Executive Director  
California Workforce Investment Board  
(916)324-3425  
[Tim.rainey@cwib.ca.gov](mailto:Tim.rainey@cwib.ca.gov)